



Protecting the world from
emerging and pandemic threats

www.thepandemicinstitute.org



Founding Partners:



Welcome to The Pandemic Institute

The Pandemic Institute's mission is to accelerate the response to emerging infection threats, unify global intelligence and produce high impact outputs applicable to governments, businesses, and individuals globally.

The Pandemic Institute, launched in 2021, is formed of seven founding partners: The University of Liverpool, Liverpool School of Tropical Medicine, Liverpool John Moores University, Liverpool City Council, Liverpool City Region Combined Authority, Liverpool University Hospital Foundation Trust, and Knowledge Quarter Liverpool.

We provide comprehensive end-to-end capabilities across the emerging infection lifecycle to accelerate the global response to current and future emerging threats.

Through our founding partners, we have an impressive breadth of world-leading clinical, academic, public health and data-driven expertise.

Our combined networks of partners and hubs located across the world provides a unique opportunity for The Pandemic Institute to maximise our global reach.



Professor Tom Solomon - Director, The Pandemic Institute

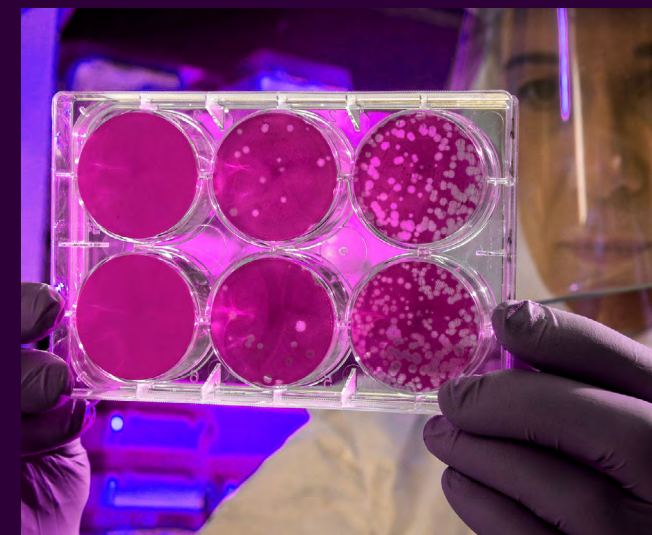


“Our vision is to enable whole systems to proactively respond to emerging pandemic threats. With a breadth of world-leading clinical, academic, public health and data-driven expertise, our work is accelerating the response to emerging infection threats.”

Professor Tom Solomon
Director, The Pandemic Institute

“Liverpool has a long and illustrious history in infectious diseases research including a world-class track record in drug discovery. This expertise played a pivotal role in leading and structuring the Liverpool City Region's research response to the Covid-19 pandemic.”

Professor Louise Kenny
Executive Pro-Vice-Chancellor for the Faculty of Health and Life Sciences, University of Liverpool



Builds on Liverpool's unique strengths in health and life sciences, infection research and outbreak response



An end-to-end approach, stretching from averting pandemics to recovering from them



Positions Liverpool nationally and globally in pandemic response



Aligned to the G7 100 days mission to produce diagnostics, therapeutics and vaccines



Funded through a mix of public and private investment and donation

The Pandemic Institute is a world-leading comprehensive end-to-end institution for response to emerging infections

Liverpool city has a unique set of characteristics and existing institutions which are not directly replicable either nationally or globally and which provide the optimal foundations on which to build a globally focused Institute.

The city's institutions have existing international partnerships with academic institutions and global charitable foundations.

We combine civic leadership with academic capability and system wide infrastructure to deliver pioneering research with global impact.

The Pandemic Institute is ready to leverage a whole system of existing experience and capabilities deliver truly global outcomes and results.



EXPERTISE

Liverpool provides extensive expertise in health and life sciences research of direct relevance to emerging infections:

- We are unique within the Higher Education ecosystem in the UK with medical, veterinary, public health, tropical medicine and behavioural science schools all in one city
- Provides highly concentrated, exceptionally talented academic workforce based in the region
- Excellence in 'One Health' research and health informatics



CAPABILITY

Key foundational capabilities exist in the city region:

- Liverpool was the first city globally to undertake city-wide smart asymptomatic COVID-19 testing
- Delivered successful Events Research Programmes to open the hospitality and night-time economy
- Provides national capability in pathogen sequencing through the Centre for Genome Research
- Pioneered the AGILE clinical trial platform to rapidly test new potential treatments in "first in man" clinical studies



INFRASTRUCTURE

Liverpool is ready to scale existing infrastructure:

- We have a critical mass of civic organisations & academic institutions acting as one system, leveraging its infrastructure for the pandemic lifecycle
- Home to one of only five High Consequences Infectious Disease Units in the UK
- Liverpool City Region has extensive vaccine and pharmaceutical manufacturing experience
- We developed and host the world's largest data asset of potential zoonotic pathogens
- We host the Centre for Global Vaccine Research, a leading research facility for development of new vaccines

“The Pandemic Institute is built on the strong foundations of Liverpool’s unique experience and strengths. Liverpool city region plays a critical role in global health and delivered health data science, infection research and clinical countermeasures in time to make a critical difference during the COVID-19 pandemic.”

Tony Reeves

Chief Executive, Liverpool City Council

To deliver positive societal change and impact, The Pandemic Institute is translating research into practical and applicable solutions across five pillars of impact.



Predict

Proactive identification of pathogens, hosts and locations of potential future epidemics and pandemics



Prepare

Supporting increased capacity and capability to translate insights into action



Prevent

Raising barriers to slow the transmission of infectious diseases



Respond

Accelerating scalable diagnostics, therapeutics and vaccines to protect the global community and environment



Recover

Repairing negative social, environmental and economic impacts from emerging infections and enabling new growth



The Pandemic Institute is at the heart of an extensive global network of partners

COVID-19 has demonstrated the need for global partnerships and the value of their ability to rapidly assimilate research across a global network and to respond rapidly anywhere across the world.

Liverpool has been working in the field of infectious diseases research for well over 120 years. In that time, we have been at the forefront of innovation and this is reflected in our extensive national and international partnerships, of which The Pandemic Institute will now become a key part.



The Pandemic Institute is expanding on this existing network, supporting teams in Asia, Africa and South America that can be rapidly mobilised to respond to emerging infections wherever they occur.

The Pandemic Institute is it at the heart of a much larger global network of partners. COVID-19 has demonstrated the need for global partnerships and the value of their ability to rapidly assimilate research across a global network and to respond rapidly anywhere across the world.

The international reach of the The Pandemic Institute is extensive. We are working closely with key international agencies such as the World Health Organisation, PATH, and the American and European Centres for Disease Control.

Collaborate with us

The Pandemic Institute has extensive collaborators across five continents. We work across sectors and industries to bring together leading experts. Public and private partnership are core to our delivery.

If you would like to collaborate with us, please contact the institute contact@thepandemicinstitute.org

Our network of international partners and collaborators:



“

The Pandemic Institute is a globally looking institute which will accelerate the response to current and future emerging infection threats, by unifying intelligence and generating scientific excellence with societal impact for all.

Professor David Laloo
Director, Liverpool School of Tropical Medicine

”



Contact us

The Pandemic Institute
The Spine
Paddington Village
Smithdown Lane
Liverpool
L7 3FA
United Kingdom

contact@thepandemicinstitute.org

www.thepandemicinstitute.org